

# 6935 Mobile Curved Top Browser Box

## Tools Not Supplied:

- Allen Key 4mm
- Phillips head screwdriver
- Spanner

Read through instructions first prior to starting assembly

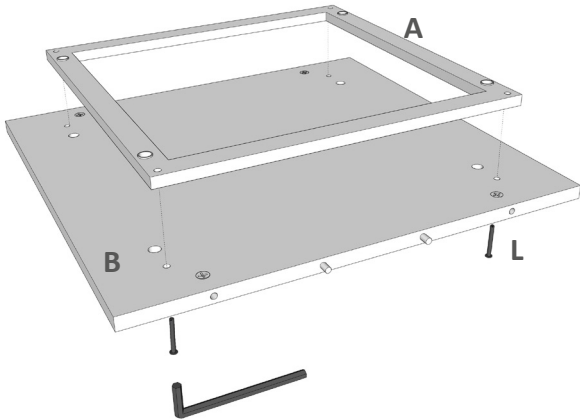
Cam pins can be pre-screwed into panels to save time during assembly.



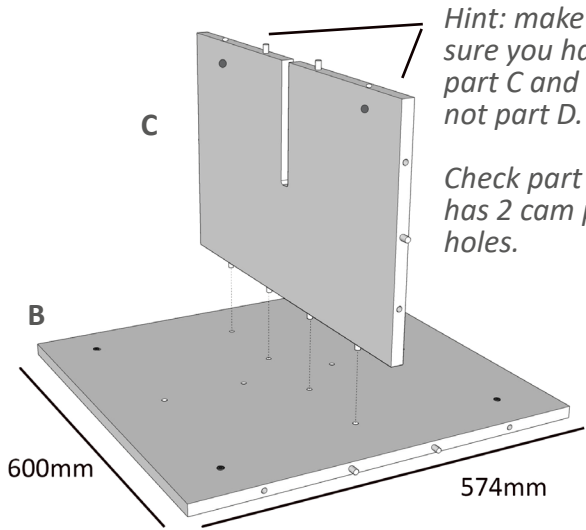
## Parts Supplied:

A	B	C	D	E	F	G	H	I	J	K	L
1 x Steel Frame 470mm x 470mm	1 x Base Panel 600mm x 574mm	1 x Large Base Divider Panel 600mm x 346mm	1 x Small Base Divider Panel 572mm x 346mm	1 x Centre Flat Panel 598mm x 572mm	2 x Side Panels 600mm x 566mm	1 x Large Top Divider Panel 572mm x 182mm	1 x Small Top Divider Panel 564mm x 118mm	2 x Top Front & Back Panels 572mm x 180mm	2 x swivel castors & 2 x locking castors	30 x Cam Pins 30 x Cam locks (pre-inserted - not loose)	4 x Nut & Bolt Set

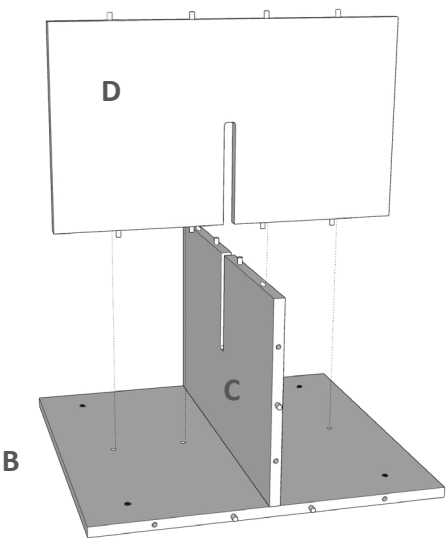
Step 1: Attach steel frame (A) to Base Panel (B) (line up holes on frame and panel) with Nuts & Bolts (L). Tighten nuts with allen key.



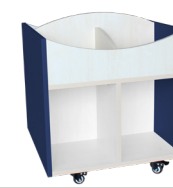
Step 2: Push down Large Base Divider Panel (C) onto other side of Base Panel (B).



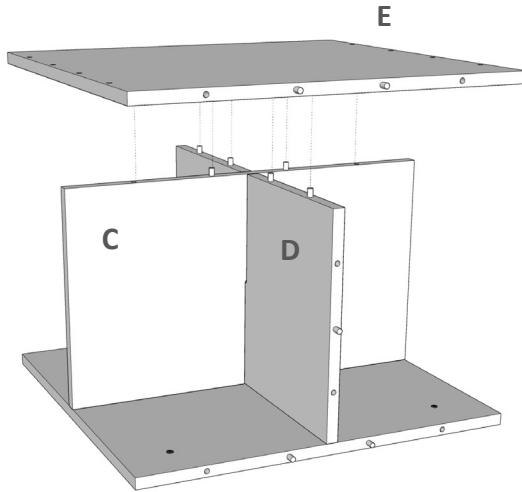
Step 3: Push down Small Base Divider Panel (D) into slot of Divider (C) and push into Base Panel (B).



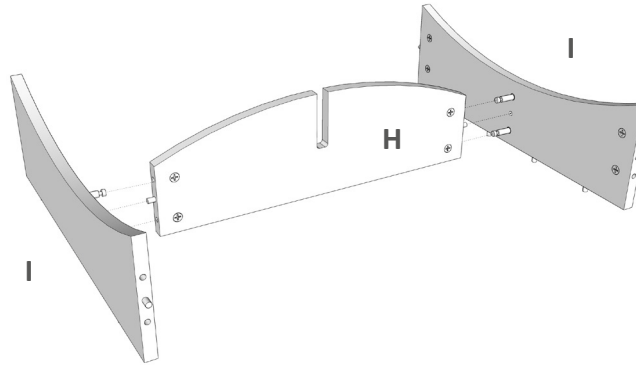
# 6935 Mobile Curved Top Browser Box



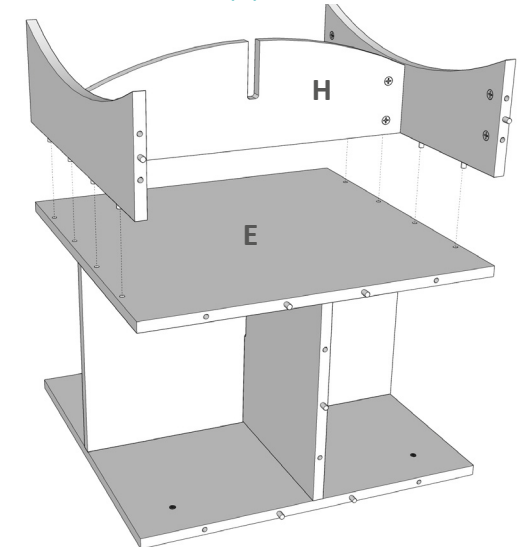
Step 4: Screw 2 cam pins (K) into Centre Flat Panel (E) Push down Centre Flat Panel (E) onto Dividers. Lock cam locks by turning until tight.



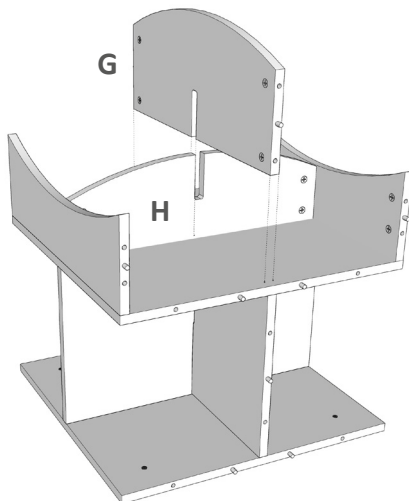
Step 5: Screw 2 cam pins (K) into both Top Front and Back Panels (I). Push Top Front and Back panels (I) into Small Top Divider Panel (H) Lock cam locks by turning until tight.



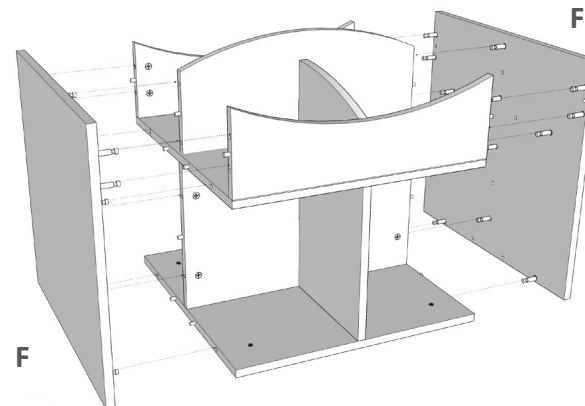
Step 6: Push Divider and Front & Back Panels into Centre Flat Panel (E)



Step 7: Slide down Large Top Divider Panel (G) onto Small Top Divider Panel (H).



Step 8: Screw 12 cam pins (K) into both Side Panels (F). Push into sides of unit. Lock cam locks by turning until tight.



Step 9: Install castors (J) onto base of unit in pre-threaded holds. Tighten until the castors are flush with the base frame.

